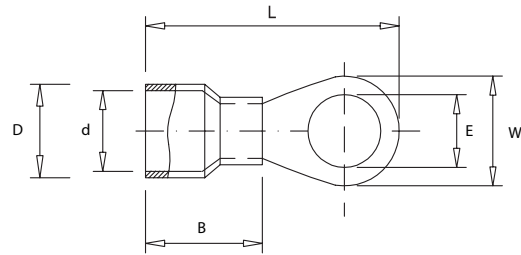




Insulated RING terminal

Ring type terminals are made from tinned-plated copper insulated with PVC.



Type	WIRE RANGE		DIMENSIONS						COLOR
	AWG/MCM	mm ²	ΦE	ΦD	Φd	W	B	L	
VF1.25-3	22-16	0.25-1.65	3.7	4	1.7	5.5	10.4	17.3	RED
VF1.25-3A			3.2	4	1.7	5.5	10.4	17.3	
VF1.25-4			4.3	4	1.7	8	10.4	21.8	
VF1.25-4M			4.3	4	1.7	6.6	10.4	20.3	
VF1.25-5			5.3	4	1.7	8	10.4	21.8	
VF1.25-6			6.4	4	1.7	11.6	10.4	27.5	
VF1.25-8			8.4	4	1.7	11.6	10.4	27.5	
VF1.25-10			10.5	4	1.7	13.6	10.4	31.8	
VF2-3M	16-14	1.04-2.63	3.7	4.6	2.3	6.6	10.4	19.8	BLUE
VF2-4			4.3	4.6	2.3	8.5	10.4	22.3	
VF2-4M			4.3	4.6	2.3	6.6	10.4	19.8	
VF2-5			5.3	4.6	2.3	9.5	10.4	22.3	
VF2-6			6.4	4.6	2.3	12	10.4	27.3	
VF2-8			8.4	4.6	2.3	12	10.4	27.3	
VF2-10	10.5	4.6	2.3	13.6	10.4	30.8			
VF5.5-3	12-10	4.60-6.64	3.7	6.6	3.5	9.5	13.5	26.5	YELLOW
VF5.5-4			4.3	6.6	3.5	9.5	13.5	26.5	
VF5.5-5			5.3	6.6	3.5	9.5	13.5	26.5	
VF5.5-6S			6.4	6.6	3.5	12	13.5	29.2	
VF5.5-8			8.4	6.6	3.5	15	13.5	34.5	
VF5.5-10			10.5	6.6	3.5	15	13.5	34.5	



ReyLuc